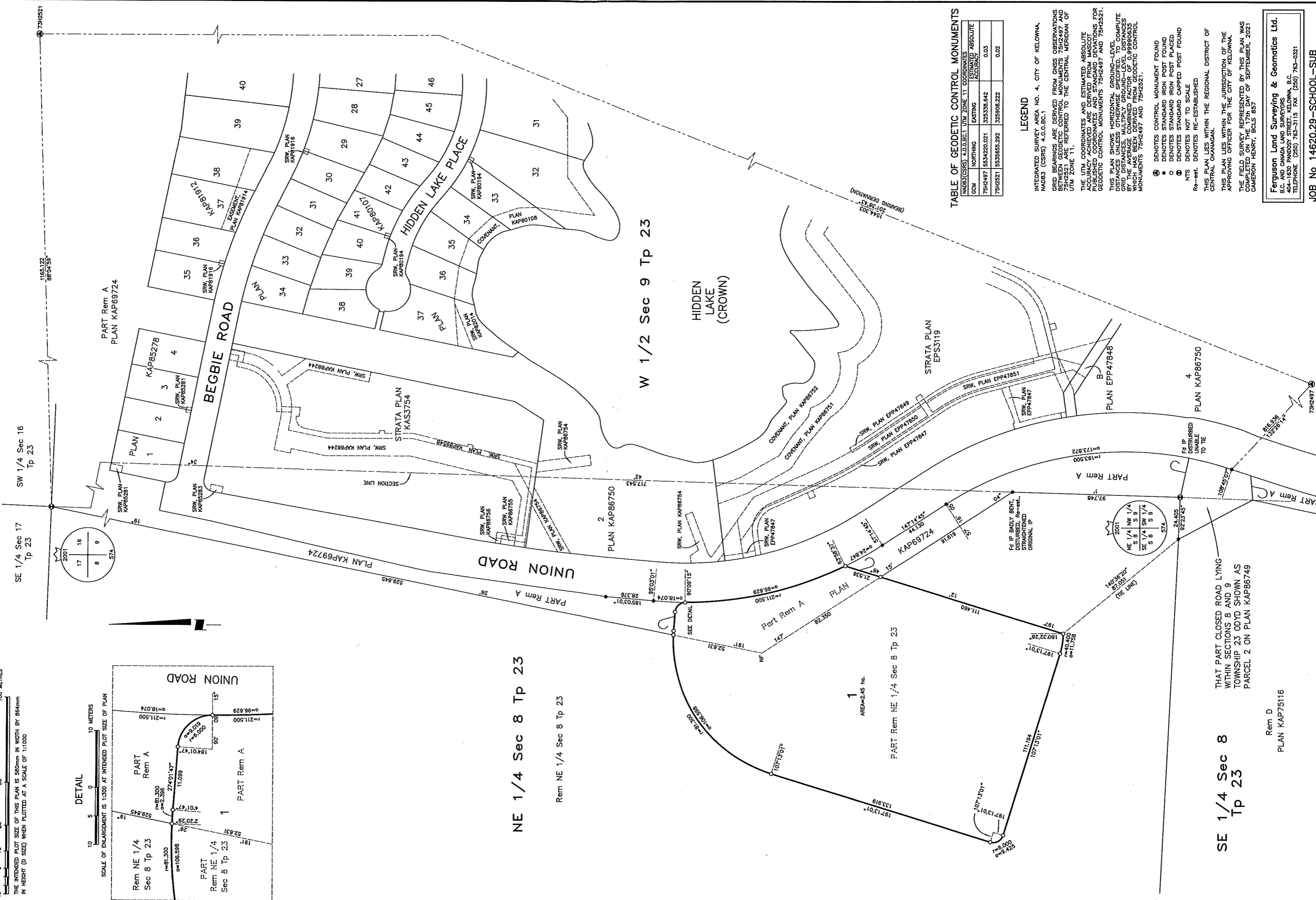
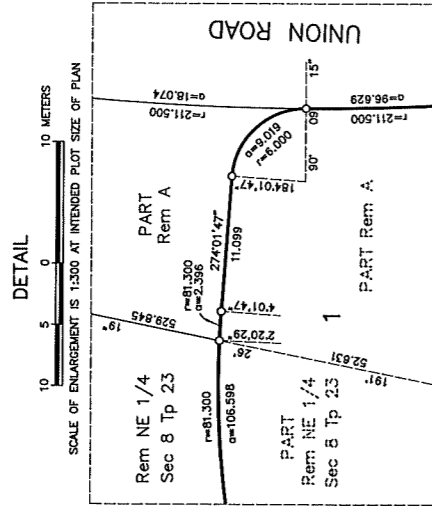


SUBDIVISION PLAN OF PART OF THE NORTH EAST 1/4 OF SECTION 8 TOWNSHIP 23 ODYD EXCEPT PLAN KAP69724 AND PART OF LOT A SECTIONS 4, 5, 8 AND 9 TOWNSHIP 23 ODYD PLAN KAP69724 EXCEPT PLANS KAP71944, KAP73768, KAP75949, KAP78547, KAP80107, KAP81912, KAP85278, KAP86750, EPP24895 AND EPP93548

BCOS 82E.093

15 0 10 25 50 100 METRES
 THE INTENDED PLOT SIZE OF THIS PLAN IS 560mm IN WIDTH BY 864mm IN HEIGHT (O SIZE) WHEN PLOTTED AT A SCALE OF 1:1000



NE 1/4 Sec 8 Tp 23

Rem NE 1/4 Sec 8 Tp 23

W 1/2 Sec 9 Tp 23

SE 1/4 Sec 8 Tp 23

Rem D
 PLAN KAP75116

THAT PART CLOSED ROAD LYING WITHIN SECTIONS 8 AND 9 TOWNSHIP 23 ODYD SHOWN AS PARCEL 2 ON PLAN KAP86749

TABLE OF GEODETIC CONTROL MONUMENTS

| MONUMENT | UTM ZONE 11 COORDINATES | ESTIMATED ABSOLUTE ACCURACY | |
|----------|-------------------------|-----------------------------|------|
| CCM | NORTHING | EASTING | |
| 75H2497 | 5534220.021 | 3295336.642 | 0.03 |
| 75H2821 | 5535655.292 | 3295906.222 | 0.02 |

LEGEND
 INTEGRATED SURVEY AREA NO. 4, CITY OF KELOWNA
 NAD83 (CSRS) 4.0.0.BC.1
 GRID BEARINGS ARE DERIVED FROM GNSS OBSERVATIONS BETWEEN GEODETIC CONTROL MONUMENTS 75H2497 AND 75H2821, ARE REFERRED TO THE CENTRAL MERIDIAN OF UTM ZONE 11.
 THE UTM COORDINATES AND ESTIMATED ABSOLUTE ACCURACY ACHIEVED ARE DERIVED FROM MASCOOT STRATA PLAN EPP47849 AND STANDARD DEVIATIONS FOR GEODETIC CONTROL MONUMENTS 75H2497 AND 75H2821.
 THIS PLAN SHOWS HORIZONTAL GROUND-LEVEL COMPUTED GRID DISTANCES MULTIPLY GROUND-LEVEL DISTANCES BY THE AVERAGE COMBINED FACTOR OF 0.99996035 WHICH HAS BEEN DERIVED FROM GEODETIC CONTROL MONUMENTS 75H2497 AND 75H2821.
 DENOTES CONTROL MONUMENT FOUND
 DENOTES STANDARD IRON POST FOUND
 DENOTES STANDARD IRON POST PLACED
 DENOTES STANDARD CAPPED POST FOUND
 NTS DENOTES NOT TO SCALE
 Re-est. DENOTES RE-ESTABLISHED

THIS PLAN LIES WITHIN THE REGIONAL DISTRICT OF CENTRAL OKANAGAN.
 THIS PLAN LIES WITHIN THE JURISDICTION OF THE APPROVING OFFICER FOR THE CITY OF KELOWNA.
 THE FIELD SURVEY REPRESENTED BY THIS PLAN WAS COMPLETED ON THE 17th DAY OF SEPTEMBER, 2021
 CAMERON HENRY, BCLS 857

Ferguson Land Surveying & Geomatics Ltd.
 B.C. AND CANADA LAND SURVEYORS
 404-1630 PANDOSY STREET, KELOWNA, B.C.
 TELEPHONE (250) 763-3115 FAX (250) 763-0321

JOB No 14620.29-SCHOOL-SUB

5/2/2021 10:16:20 AM Plan View\14620.29\14620.29.dwg (Scale: 1:1000) User: c:\program files\autodesk\lsp\lsp.dll